



# FUME EXTRACTORS

 **ELECTREX**<sup>®</sup>  
welding since 1946

## OVER 70 YEARS OF EXPERIENCE IN THE FIELD OF WELDING

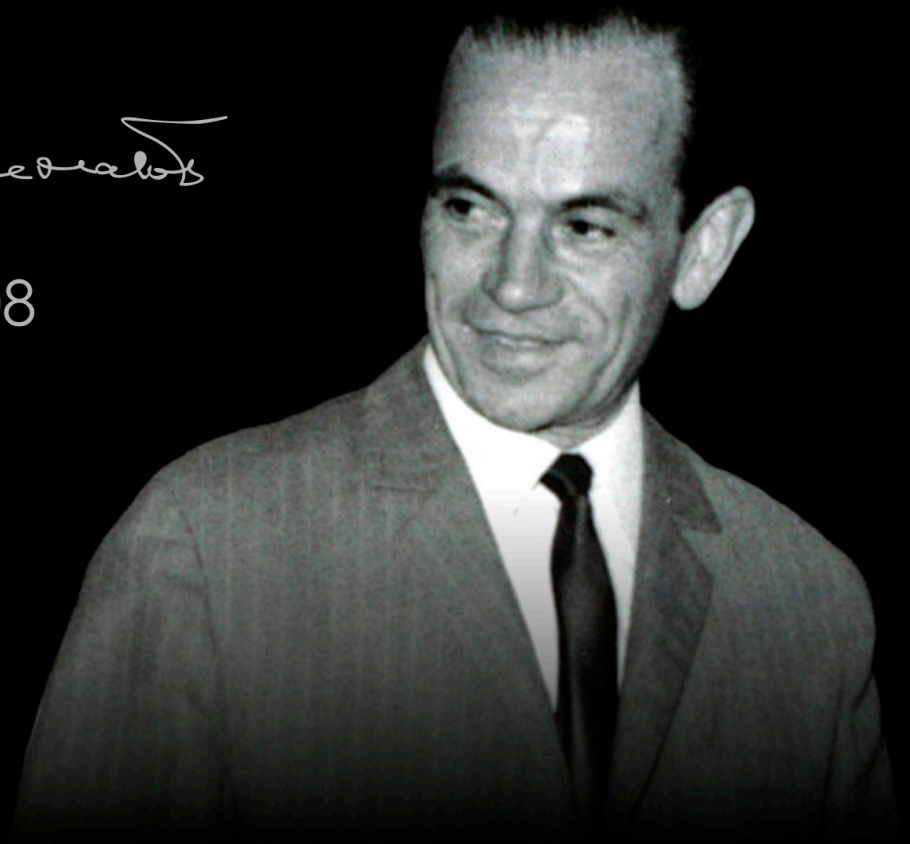
When João Rodrigues de Matos conceived the first welding equipment in 1946, it was far from imagining the importance and the repercussion that the Electrex brand currently has around the globe. Over 70 years, Electrex maintains a worldwide presence in the most diverse markets with great influence in the welding world. The accuracy and trust that characterize relationships with our customers are the key to seven decades of success.



**WELDING SINCE**  
**1946**

*Joseph P. ...*

1917 - 2008



# OVER 70 YEARS OF EXPERIENCE IN THE FIELD OF WELDING

## A CUSTOMER-ORIENTED BRAND



Electrex places all its commitment and effort in satisfying the needs of its customers, offering solutions that are flexible and tailored to each one. Each order is executed with the utmost care and rigor to satisfy the needs of our customers.

## HUMAN RESOURCES



The most valuable resource of a company is on the people who place their commitment into the organization every day. Electrex is aware of this value and therefore strives to meet the needs of its employees by providing them with the best possible working conditions in order to maintain a healthy and motivating work environment.

## SUPPLIERS



Our suppliers are key components in the great gear that is Electrex and are carefully selected, from the moment of goods ordering to products arrival in the hands of our customers. They are the suppliers that help the organization to meet deadlines and objectives, so that the products are produced quickly and with quality, meeting the demand of our customers.

## INOVATION



Electrex seeks to offer its customers more and better every day, and therefore it is requested the constant search for more innovative production processes in order to develop products of high demand and quality that satisfy the needs of our customers.

## SUSTAINABILITY

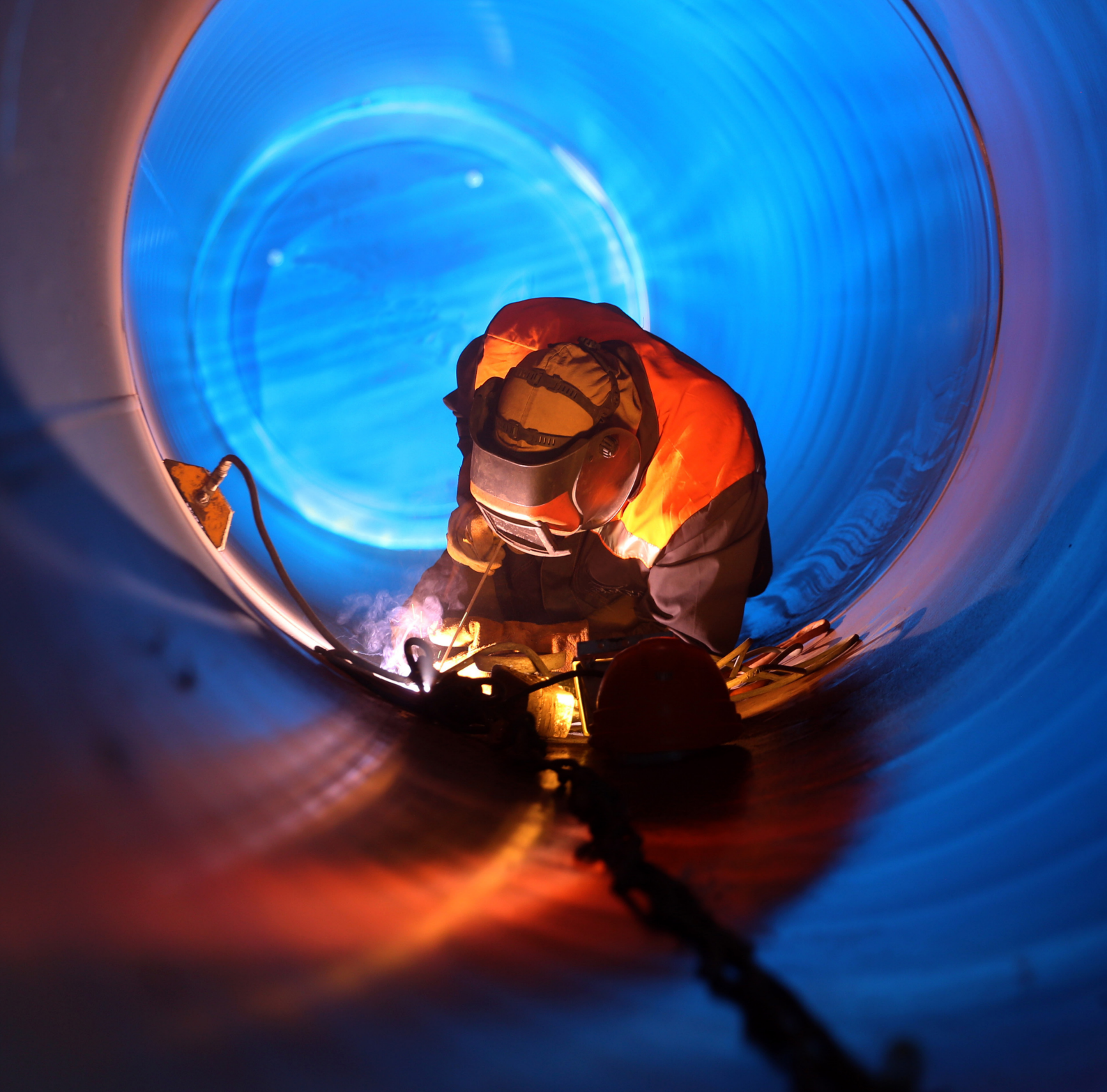


Electrex is committed to keeping the planet free of pollution so that future generations can inhabit it in the same way. Electrex complies with all environmental and safety standards imposed by its competent authorities, both at European and global level.

## FUTURE CHALLENGES



An investment in the production area and commitment to the latest production processes are some of the challenges that Electrex proposes, so that it can offer its customers the best welding equipment available in the market. Electrex takes its work as a welding equipment manufacturer very seriously and briefly intends to diversify its export markets and consolidate its presence in the existing ones.



João R. Matos S.A. reserves the right to change the technical specifications without prior notice, non-contractual images.



Management System  
ISO 9001:2015



www.tuv.com  
ID 9108645664

# INDEX

P. 7 Index

## FUME EXTRACTORS

- P. 10 M1/M2 with disposable filter
  - P. 10 M3 with activated carbon filter
  - P. 13 SM with disposable filter
  - P. 13 SMK with activated carbon filter
  - P. 17 KMF downdraft with extraction
  - P. 18 KTF downdraft extraction grinding table
  - P. 20 KTM without fan and filter
  - P. 22 I8 robotic welding hood with curtain
  - P. 24 TSA fume extraction arms
  - P. 26 MSF, TSF series snail exhaust fan
  - P. 28 MDT portable snail exhaust fan  
Welding curtains
- P. 30 Electrex Services





# FUME EXTRACTORS



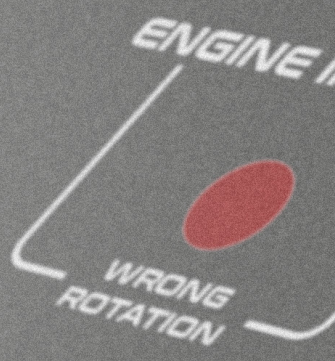


**ELECTREX**  
welding since 1946  
112/2100



START ▲

▼ STOP





# FUME EXTRACTORS SERIE M

**Mobile Unit**  
Lockable Wheels

**Activated Carbon Filter**  
Odor and gas retention

**Single arm**  
MobilEco

**HEPA filter**  
High Efficiency Filtration

**Double arm**  
Length options

**Jet-Pulse**  
Automatic Filter Cleaning

**Disposable Cassette Filter**  
ePM1 80% (F9)

## Applications

- Suitable for filtering fume occurred during welding process
- Suitable for laser marking and processing machines
- Suitable for processing unalloyed and low-alloy steel
- Suitable for filtering low level of fume

## Specifications

- Low energy consumption, high performance
- Movable thanks to its wheeled structure
- Minimizing the loss of worktime by carrying out the maintenance only during filter change time thanks to the filter indicator buttons
- Minimizing the risk of fire related to the sparks thanks to its washable aluminium mesh pre filter
- Easy to use on welding process thanks to its 2 meter extraction arm connection
- Possible to add alternative filter options without changing the current body
- 2,7m feeding cable



# FUME EXTRACTORS SERIE M



<b>TECHNICAL DATA</b>		<b>M1/1100</b>	<b>M2/2100</b>	<b>M2/2200</b>	<b>M3/2100</b>	<b>M3/2200</b>
Input voltage		1x230V/50Hz	3x400V/50Hz	3x400V/50Hz	3x400V/50Hz	3x400V/50Hz
Power motor		575W	1.1kW	1.5kW	1.5kW	1.5kW
Arms		1	1	2	1	2
Arms length*		2m	2m	2m	2m	2m
Arms diameter		Ø152mm	Ø152mm	Ø152mm	Ø152mm	Ø152mm
Filtration method		2 stages	3 stages	3 stages	-	-
	Active carbon filter	-	-	-	4 stages	4 stages
	HEPA filter	-	-	-	4 stages	4 stages
	Jet Pulse filter	-	-	-	Auto clean - 2 stages	Auto clean - 2 stages
Filter type		Disposable Cassette	Disposable Cassette	Disposable Cassette	-	-
	Active carbon filter	-	-	-	Disposable Cassette	Disposable Cassette
	HEPA filter	-	-	-	Disposable Cassette	Disposable Cassette
	Jet Pulse filter	-	-	-	Jet-Pulse Cartridge	Jet-Pulse Cartridge
Filtration area		9m <sup>2</sup>	16m <sup>2</sup>	16m <sup>2</sup>	-	-
	Active carbon filter	-	-	-	16m <sup>2</sup>	16m <sup>2</sup>
	HEPA filter	-	-	-	27m <sup>2</sup>	27m <sup>2</sup>
	Jet Pulse filter	-	-	-	2 x 10m <sup>2</sup>	2 x 10m <sup>2</sup>
1st stage		Mesh Spark Arrestor	Mesh Spark Arrestor	Mesh Spark Arrestor	Mesh Spark Arrestor	Mesh Spark Arrestor
2nd stage		ePM1 80%	Thickness 70% (G4 pre-filter)	Thickness 70% (G4 pre-filter)	Thickness 70% (G4 pre-filter)	Thickness 70% (G4 pre-filter)
	Active carbon filter	-	-	-	Thickness 70% (G4 pre-filter)	Thickness 70% (G4 pre-filter)
	HEPA filter	-	-	-	Thickness 70% (G4 pre-filter)	Thickness 70% (G4 pre-filter)
	Jet Pulse filter	-	-	-	ePM10 60% (M6) 2 x 10m <sup>2</sup>	ePM10 60% (M6) 2 x 10m <sup>2</sup>
3rd stage		-	ePM1 65% (F8)	ePM1 65% (F8)	ePM1 65% (F8)	ePM1 65% (F8)
4th stage		-	-	-	HEPA active carbon	HEPA active carbon
Extraction capacity		850 m <sup>3</sup> /h	1300 m <sup>3</sup> /h	2 x 850m <sup>3</sup> /h	-	-
	Active carbon filter	-	-	-	1300m <sup>3</sup> /h	2 x 750m <sup>3</sup> /h
	HEPA filter	-	-	-	1300m <sup>3</sup> /h	2 x 750m <sup>3</sup> /h
	Jet Pulse filter	-	-	-	1300m <sup>3</sup> /h	2 x 1000m <sup>3</sup> /h
Compressed air (Jet-Pulse)		-	-	-	5-6 bar	5-6 bar
Noise level		65dB	72dB	72dB	72dB	72dB
Maximum pressure		1200 Pa	2000 Pa	2200 Pa	2200 Pa	2200 Pa
Weight (w/o arm)		49 kg	96 kg	99 kg	115 kg	118 kg
Dimensions (LxWxH)		480x480x820mm	650x750x1125mm	650x750x1125 mm	650x750x1285 mm	650x750x1285 mm

\*Arms available with 2, 3 and 4m length



# FUME EXTRACTORS SERIE M

<b>M1 SERIES WITH DISPOSABLE FILTER</b>	<b>Ref.</b>
Fume extractor M1/1100 without arm	CC112695
Fume extractor M1/1100 with 2m arm	CC112696
Spark arrestor washable mesh filter	CC112697
F9 class 0445x0445x0220 main cassette filter 9m <sup>2</sup>	CC112698

<b>M2 SERIES WITH DISPOSABLE FILTER</b>	<b>Ref.</b>
Fume extractor M2/2100 without arm	CC112699
Fume extractor M2/2100 with 2m arm	CC112700
Fume extractor M2/2100 with 3m arm	CC112426
Fume extractor M2/2100 with 4m arm	CC112701
Fume extractor M2/2200 without arms	CC112702
Fume extractor M2/2200 with 2m arms	CC112703
Fume extractor M2/2200 with 3m arms	CC112704
Fume extractor M2/2200 with 4m arms	CC112425
G4 class 0597x0597x0020 white fiber pre filter (10 per set)	CC112705
F8 class 0597x0597x0300 main cassette filter 16m <sup>2</sup>	CC112706

<b>M3 SERIES WITH ACTIVATED CARBON FILTER</b>	<b>Ref.</b>
Fume extractor M3/2100 without arm	CC112707
Fume extractor M3/2100 with 2m arm	CC112708
Fume extractor M3/2100 with 3m arm	CC112709
Fume extractor M3/2100 with 4m arm	CC112710
Fume extractor M3/2200 without arms	CC112711
Fume extractor M3/2200 with 2m arms	CC112712
Fume extractor M3/2200 with 3m arms	CC112713
Fume extractor M3/2200 with 4m arms	CC112714
G4 class 0597x0597x0020 white fiber pre filter (10 per set)	CC112705
F8 class 0597x0597x0300 main cassette filter 16m <sup>2</sup>	CC112706
Active carbon 0597x0597x0075 cassette filter 12kg	CC112715

# FUME EXTRACTORS SERIE SM/SMK



 **Stationary Unit**  
More space available

 **Single arm**  
Length Options

 **Double arm**  
Length Options

 **Disposable Cassette Filter**  
ePM1 65% (F8)

 **Activated Carbon Filter**  
Odor and Gas Retention

 **HEPA filter**  
High Efficiency Filtration

## Applications

- Designed for filtering fume and fine dust occurred during welding process
- Suitable for processing unalloyed and low-alloy steel welding
- Suitable for filtering low and medium level of fume and dust
- Suitable for filtering vapour occurred during light level of chemical applications (Activated Carbon Filter)
- Proper to use for suction of odor molecules as well (Activated Carbon Filter)
- It is suitable for environments where Hepa filter is required to return the purified air to the same ambient

## Specifications

- Easy to use in workshops which has limited spaces
- Reachable to desired area thanks to its flexible arm structure
- Fully complies with EU Machinery Safety Regulation
- Minimizing the loss of worktime by carrying out the maintenance only during filter change time thanks to the filter indicator buttons
- Minimizing the risk of fire related to the sparks thanks to its aluminium spark arrestor
- If the phase sequence is wrong or there is a missing phase, the device will not work and the motor will be protected from burning
- If the fan turns in the opposite direction, the warning lamp comes on.
- Easy access thanks to external control panel

## Options

- More input voltage available
- More arm length available: 2m, 3m, 4m, 5m, 6m e 7m





# FUME EXTRACTORS SERIE SM/SMK



TECHNICAL DATA	SM 910	SM 920	SMK 910	SMK 9120
Input voltage	3x400V/50Hz	3x400V/50Hz	3x400V/50Hz	3x400V/50Hz
Power motor	1,1 kW	1,5 kW	1,5 kW	1,5 kW
Arms	1	1	1	1
Arms length*	2m	2m	2m	2m
Arms diameter	Ø152mm	Ø152mm	Ø152mm	Ø152mm
Filtration method	3 stages	3 stages	4 stages	4 stages
Filter type	Disposable Cassette	Disposable Cassette	Disposable Cassette	Disposable Cassette
Filtration area	16m <sup>2</sup>	16m <sup>2</sup>	-	-
Active carbon filter	-	-	16m <sup>2</sup>	16m <sup>2</sup>
HEPA filter	-	-	27m <sup>2</sup>	27m <sup>2</sup>
1st stage	Mesh Spark Arrestor	Mesh Spark Arrestor	Mesh Spark Arrestor	Mesh Spark Arrestor
2nd stage	Thickness 70% (G4 pre-filter)	Thickness 70% (G4 pre-filter)	Thickness 70% (G4 pre-filter)	Thickness 70% (G4 pre-filter)
3rd stage	ePM1 65% (F8)	ePM1 65% (F8)	ePM1 65% (F8)	ePM1 65% (F8)
4th stage	Active carbon filter	-	Carvão ativo de granulo	Carvão ativo de granulo
HEPA filter	-	-	Filtro H13 HEPA11m <sup>2</sup>	Filtro H13 HEPA11m <sup>2</sup>
Extraction capacity	1300m <sup>3</sup> /h	2x850 m <sup>3</sup> /h	1300m <sup>3</sup> /h	2 x 750m <sup>3</sup> /h
Noise level	72 dB	72 dB	72 dB	72 dB
Maximum pressure	2000 Pa	2000 Pa	2200 Pa	2200 Pa
Weight (w/o arm)	96 kg	99 kg	131 kg	132 kg
Dimensions (LxWxH)	650x750x1125mm	650x750x1125mm	650x750x1285mm	650x750x1285mm

\*Braços disponíveis em 2, 3, 4, 5, 6 ou 7 metros

# FUME EXTRACTORS SERIE SM/SMK



<b>SM SERIES WITH DISPOSABLE FILTER</b>	<b>Ref.</b>
Fume extractor SM/910 without arm	CC112734
Fume extractor SM/910 with 2m arm	CC112735
Fume extractor SM/910 with 3m arm	CC112736
Fume extractor SM/910 S with 4m arm	CC112737
Fume extractor SM/920 without arms	CC112738
Fume extractor SM/920 with 2m arms	CC112739
Fume extractor SM/920 with 3m arms	CC112740
Fume extractor SM/920 with 4m arms	CC112741
G4 class 0597x0597x0020 white fiber pre filter (10 per set)	CC112705
F8 class 0597x0597x0300 main cassette filter 16m <sup>2</sup>	CC112706

<b>SMK SERIES WITH ACTIVATED CARBON FILTER</b>	<b>Ref.</b>
Fume extractor SMK/910 without arm	CC112742
Fume extractor SMK/910 with 2m arm	CC112743
Fume extractor SMK/910 with 3m arm	CC112744
Fume extractor SMK/910 S with 4m arm	CC112745
Fume extractor SMK/920 without arms	CC112746
Fume extractor SMK/920 with 2m arms	CC112747
Fume extractor SMK/920 with 3m arms	CC112748
Fume extractor SMK/920 with 4m arms	CC112749
G4 class 0597x0597x0020 white fiber pre filter (10 per set)	CC112705
F8 class 0597x0597x0300 main cassette filter 16m <sup>2</sup>	CC112706
Active carbon 0597x0597x0075 cassette filter 12kg	CC112715



# FUME EXTRACTORS SERIE KMF



## Welding Table

Downdraft Table, Size Options Available



## Mobile Unit

Lockable Wheels



## Disposable Cassette Filter

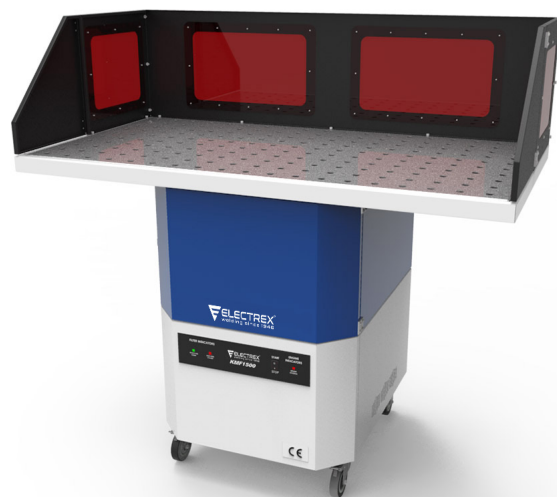
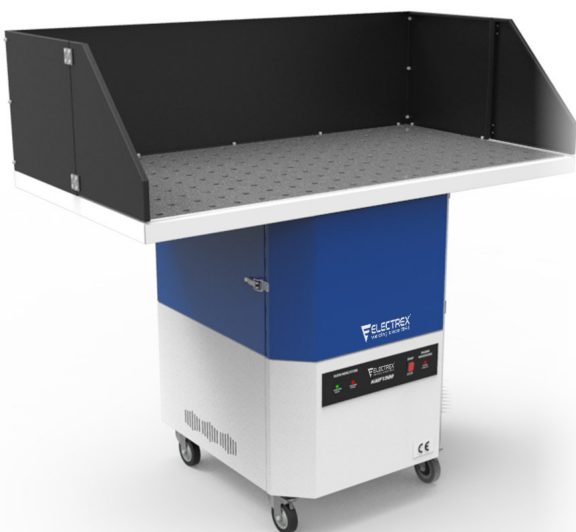
ePM1 65% (F8)

## Applications

- Designed for filtering fume occurred during welding applications
- Possible to use to prevent spreading fine dust occurred during grinding applications to the area
- Suitable for filtering low and medium level of fume

## Specifications

- Movable thanks to its wheeled structure
- Fume and dust are extracted before reaching to operator's respiratory tract thanks to downdraft extraction
- Fully complies with European Machinery Safety Regulation
- Minimizing the loss of worktime by carrying out the maintenance only during filter change time thanks to the filter indicator buttons
- Minimizing the risk of fire related to the sparks thanks to its washable aluminium mesh pre filter
- If the phase sequence is wrong or there is a missing phase, the device will not work and the motor will be protected from burning
- If the fan turns in the opposite direction, the warning lamp comes on
- 3 m feeding cable





# FUME EXTRACTORS SERIE KMF



## TECHNICAL DATA

### KMF

Input voltage	3x400V/50Hz
Power motor	1,5 kW
Lateral shield height	400 ~ 650mm
Table length	1000mm ~ 1200mm ~ 1500mm
Filtration method	3 stages
Filter type	Disposable Cassette
1st stage	Mesh Spark Arrestor
2nd stage	Thickness 70% (G4 pre-filter)
3rd stage	ePM1 65% (F8)
Extraction capacity	1300m <sup>3</sup> /h
Noise level	72 dB
Maximum pressure	2200 Pa
Weight (w/o shield)	120 - 125 - 130 kg
Dimensions (LxWxH)*	800x1000x1030mm

\*Dimensions can change over requests

KMF SERIES DOWNDRAFT EXTRACTION TABLE WITH DISPOSABLE FILTER	Ref.
Welding table KMF/1000 800x1000mm	CC112758
Welding table KMF/1250 800x1200mm	CC112759
Welding table KMF/1500 800x1500mm	CC112760
KMF/1000 H=400mm plexi window shield	CC112761
KMF/1250 H=400mm plexi window shield	CC112762
KMF/1500 H=400mm plexi window shield	CC112763
KMF/1000 H=650mm plexi window shield	CC112767
KMF/1250 H=650mm plexi window shield	CC112768
KMF/1500 H=650mm plexi window shield	CC112769
KMF/1000 H=400mm black shield	CC112764
KMF/1250 H=400mm black shield	CC112765
KMF/1500 H=400mm black shield	CC112766
KMF/1000 H=650mm black shield	CC112770
KMF/1250 H=650mm black shield	CC112771
KMF/1500 H=650mm black shield	CC112772
G4 class 0597x0597x0020 white fiber pre filter (10 per set)	CC112705
F8 class 0597x0597x0300 main cassette filter 16m <sup>2</sup>	CC112706



# FUME EXTRACTORS SERIE KTF

 **Grinding Table**  
Downdraft

 **Mobile Unit**  
Lockable Wheels

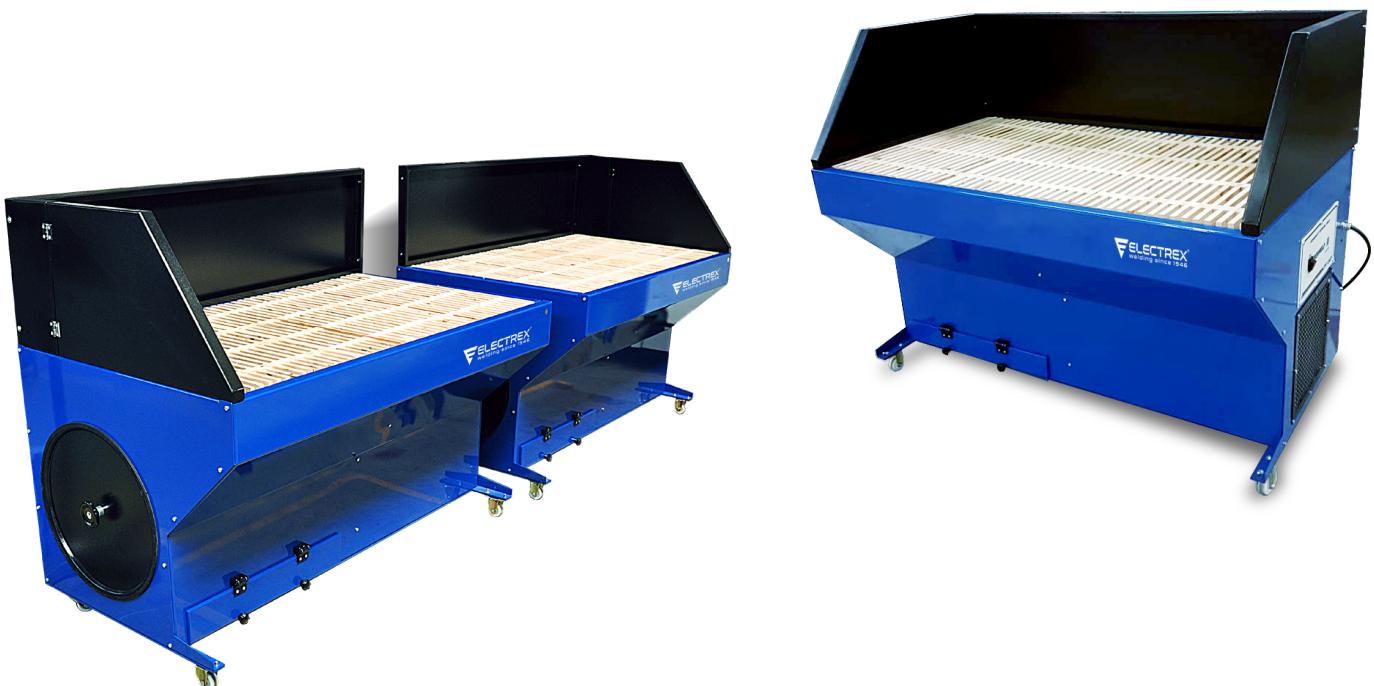
 **Jet-Pulse**  
Automatic Filter Cleaning

## Applications

- Designed for suction of dust occurred during grinding applications of small metal parts
- Suitable to use for welding applications
- Suitable for light and coarse level of grinding

## Specifications

- Fume and dust are sucked before reaching to operator's respiratory tract thanks to downdraft extraction
- It supplies safe working environment thanks to its durable material structure
- Easy to clean collected particules thanks to integrated dust tray
- It is comfortable to work with its ergonomic design
- Thanks to its wooden grill, the painted parts will not be scratched
- It prevents particles from spreading around with its three-sided closed shield system
- It provides high performance with low noise thanks to plug fan
- Movable with its wheeled structure





## TECHNICAL DATA

### KTF

Input voltage	3x400V/50Hz
Power motor	2,2 kW
Lateral shield height	650mm
Filtration method	Cassete 100% poliester
Filter type	Membrana revestida PTFE
Filtration area	20m <sup>2</sup>
Extraction capacity	3600m <sup>3</sup> /h
Noise level	72 dB
Maximum pressure	1200 Pa
Weight (s/ escudo)	350 kg
Dimensions (LxWxH)*	950x1500x1150mm

\*Dimensions can change over requests

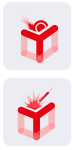
## KTF SERIES DOWNDRAFT EXTRACTION GRINDING TABLE

### Ref.

Grinding table KTF/1500 850x1500mm	CC112773
M6 class 0350x0850 cartridge filter 12m <sup>2</sup> ePTFE	CC112775



# FUME EXTRACTORS SERIE KTM



**Welding & Grinding**  
Downdraft Working Table



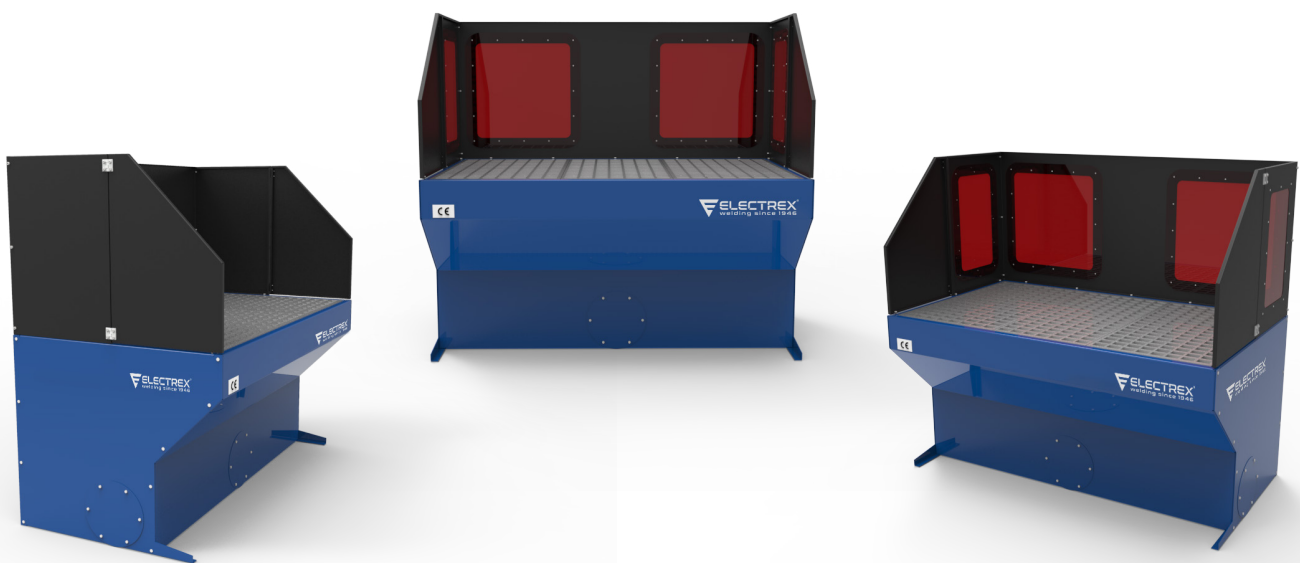
**Integrated with Central System**  
Table Without Fan And Filter

## Applications

- Designed for suction of dust occurred during grinding applications of small metal parts
- Suitable to use for welding applications
- Suitable for light and coarse level of grinding

## Specifications

- Fume and dust are sucked before reaching to operator's respiratory tract thanks to downdraft extraction
- It supplies safe working environment thanks to its durable material structure
- Easy to clean collected particules thanks to integrated dust tray
- It is comfortable to work with its ergonomic design
- It has long-life with its thick and crom-coated grille
- Could be connected to the central ventilation system
- External filter or fan system could be connected
- Shield options prevent the particules to spread around





## TECHNICAL DATA

### KTM

Conexion	Ø150mm - Ø200mm
Table height	750mm
Side shield height	400 ~ 650mm
Table length	1000mm ~ 1200mm ~ 1500mm
Recommended extraction capacity	
KTM/1000	3.000 m³/h
KTM/1250	3.500 m³/h
KTM/1500	4.500 m³/h
Maximum pression drop	500 Pa

KTM SERIES WITHOUT FAN AND FILTER	Ref.
Welding and grinding table KTM/1000 850x1000mm	CC112776
Welding and grinding table KTM/1250 850x1200mm	CC112777
Welding and grinding table KTM/1500 850x1500mm	CC112778
KTM/1000 H=400mm black shield	CC112779
KTM/1250 H=400mm black shield	CC112780
KTM/1500 H=400mm black shield	CC112781
KTM/1000 H=650mm black shield	CC112782
KTM/1250 H=650mm black shield	CC112783
KTM/1500 H=650mm black shield	CC112784



# FUME EXTRACTORS SERIE i8



**High Performance**  
New Generation Hood



**Integrated System**  
Cabin With Fan and Filter



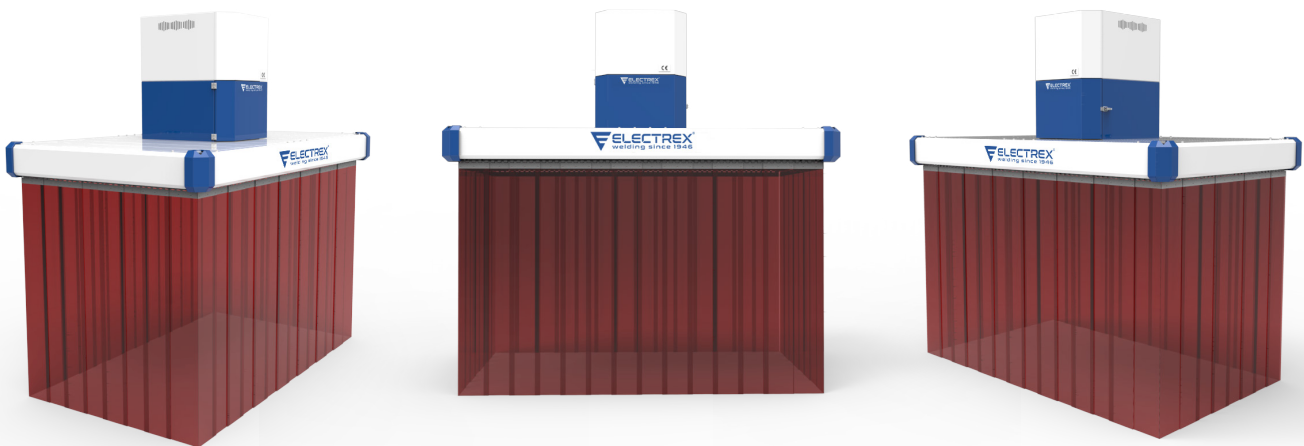
**Integrated with Central System**  
Cabin Without Fan And Filter

## Applications

- Designed to extract fume occurred during robotic welding applications
- Thanks to its aesthetic design, it could be used as hood for different applications

## Specifications

- Supplies comprehensive solutions for your facility thanks to multiple assembly options
- Thanks to its modular design, it could be produced in special sizes for your application
- Welding curtains protect your personnel and equipment from sparks
- It filters 99% of extracted fumes with its integrated filter unit
- Easy access thanks to external control panel





## TECHNICAL DATA i8

Dimensions	Flow	Pressure drop	Weight	Noise level
1000 x 1500	1200m³/h	300Pa	60kg	72dB
1000 x 2000	1600m³/h	300Pa	70kg	72dB
1000 x 2500	2000m³/h	300Pa	80kg	72dB
1000 x 3000	2400m³/h	300Pa	90kg	72dB
1500 x 1500	1800m³/h	300Pa	72kg	72dB
1500 x 2000	2400m³/h	300Pa	85kg	72dB
1500 x 2500	3000m³/h	300Pa	97kg	72dB
1500 x 3000	3600m³/h	300Pa	101kg	72dB
2000 x 2000	3200m³/h	300Pa	98kg	72dB
2000 x 2500	4000m³/h	300Pa	112kg	72dB
2000 x 3000	4800m³/h	300Pa	129kg	72dB

i8 ROBOTIC WELDING HOOD WITH CURTAIN	Ref.
Extraction hood 1000x1500mm	CC112785
Extraction hood 1000x2000mm	CC112786
Extraction hood 1000x2500mm	CC112787
Extraction hood 1000x3000mm	CC112788
Extraction hood 1500x1500mm	CC112789
Extraction hood 1500x2000mm	CC112790
Extraction hood 1500x2500mm	CC112791
Extraction hood 1500x3000mm	CC112792
Extraction hood 2000x2000mm	CC112793
Extraction hood 2000x2500mm	CC112794
Extraction hood 2000x3000mm	CC112795



# FUME EXTRACTORS SERIE TSA



**Acrobat Arm**  
Wall Mounted



**Extra Flexible and Light**  
Steel Wire Supported

## Applications

- Designed to connect to fans or central extraction systems
- Designed for extracting high level of dust and fume
- Suitable for extracting fume, gas, vapour and light dust

## Specifications

- Easy to use in workshops with limited spaces
- Reachable to desired area thanks to its flexible arm structure
- User friendly due to easy movement by one hand
- Protects arm position thanks to self supported design
- Acrobat arms can be connected to extraction ducts and fans with multiple connection options
- -40C ~ +90C durable anti-static Flame Retardant PU hose





# FUME EXTRACTORS SERIE TSA



<b>TECHNICAL DATA</b>	<b>TSA arm</b>	<b>TSB extension console*</b>
Weight	10-18kg	24-26kg
Arms diameter	Ø152mm	-
Hose diameter for extension console	-	Ø150mm
Length for TSB extension console	-	3m
Maximum pressure drop	-	1400 Pa
Arm length	2, 3, 4, 5, 6 or 7m	-

\*TSB extension console is used for arms 5m, 6m or 7m in length

<b>TSA SERIES FUME EXTRACTION ARMS</b>	<b>Ref.</b>
Wall mount consoles	CC112796
TSA/200 2m arm Ø152mm with damper	CC112797
TSA/300 3m arm Ø152mm with damper	CC112798
TSA/400 4m arm Ø152mm with damper	CC112799
Top flange skirt	CC112803
Flange gasket Ø200	CC112804
Tensioner tire Ø202x80	CC112805
Clamp Ø146x164	CC112806
Aluminum hood without damper Ø152 (for one arm)	CC112808
Aluminum hood with damper Ø152 (for two arms)	CC112809



# FUME EXTRACTORS SERIE TSF



**Extraction Fan**  
Stationary Unit



**Stationary Unit**  
Provides Space Advantage



**Single Acrobat Arm**  
Length Options

## Applications

- Designed for extracting high level of dust and fume
- Used in places where there is no need for filter
- Suitable for extracting fume, gas, vapour and light dust

## Specifications

- Easy to use in workshops with limited spaces
- Reachable to desired area thanks to its flexible arm structure
- Fully complies with European Machinery Safety Regulation
- Supplies reliable usage thanks to powerful aluminium fan
- Prevents motor failures thanks to motor protection switch





## TECHNICAL DATA

### TSF

Input voltage	3x400V/50Hz
TSB Extension Console Length*	3m
Arm diameter	Ø152mm
Extraction capacity	1.300m³/h
Noise level	70 dB
Maximum pressure	2000 Pa ~ 2200 Pa
Weight (w/o arm)	36 kg
Dimensions (LxWxH)	452x550x600 mm

\*TSB extension console is used for arms 5m, 6m or 7m in length

MSF, TSF SERIES FIXED SNAIL EXHAUST FAN	Ref.
Fan MSF/1100 de 1,1 kW with wall mounting support	CC112810
Fan TSF/200 de 1,1 kW with extraction arm 1x2m	CC112811
Fan TSF/300 de 1,1 kW with extraction arm 1x3m	CC112812
Fan TSF/400 de 1,1 kW with extraction arm 1x4m	CC112813
Fan MSF/1500 de 1,5 kW with wall mounting support	CC112814



# FUME EXTRACTORS SERIE MDT



**Extraction Fan**  
Integrated Extraction



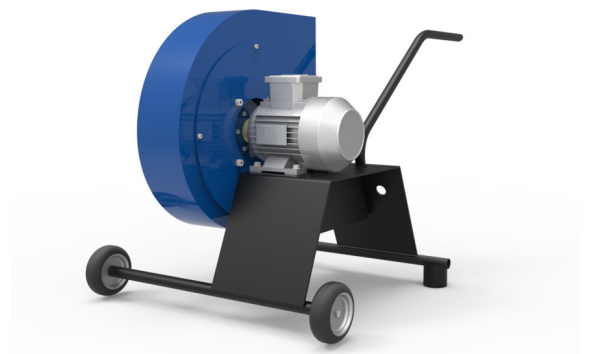
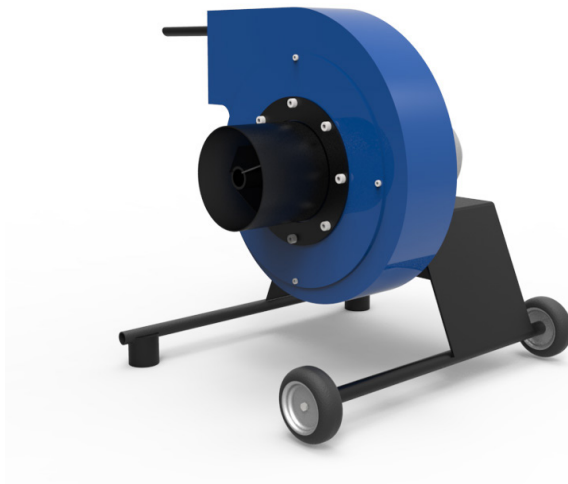
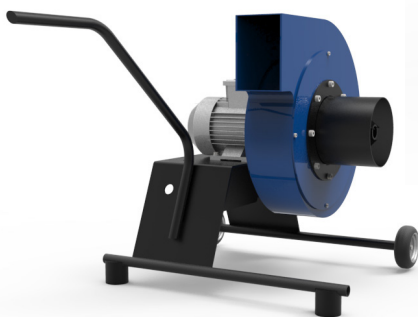
**Portable Unit**  
Movable Foot

## Applications

- Designed for extracting high level of dust and fume
- Used in places where there is no need for filter
- Suitable for extracting fume, gas, vapour and light dust

## Specifications

- Easily movable to everywhere thanks to its wheeled structure
- Thanks to its flexible suction hose and magnet, it can be reached and fixed to the desired area
- Fully complies with European Machinery Safety Regulation
- Supplies reliable usage thanks to powerful aluminium fan
- Prevents motor failures thanks to motor protection switch



# FUME EXTRACTORS SERIE MDT



## TECHNICAL DATA

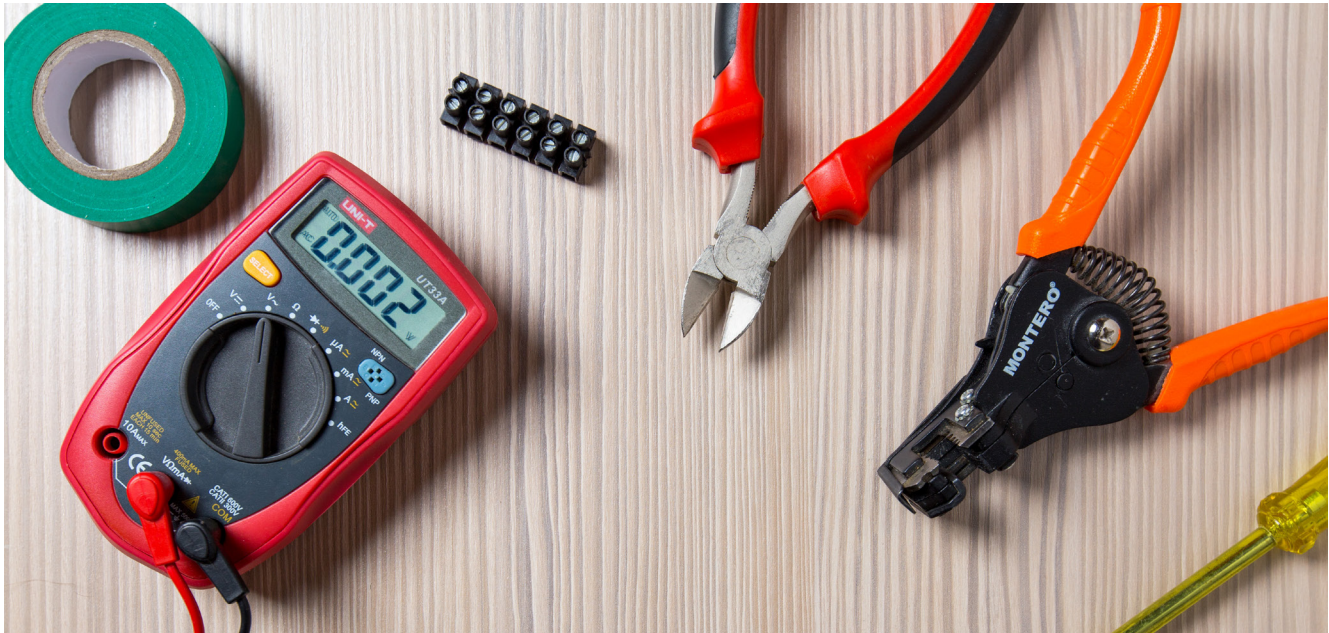
### MDT

Input voltage	3x400V/50Hz
Power motor	1,1 kW
Arm diameter	Ø152mm
Extraction capacity	2900m <sup>3</sup> /h
Noise level	70 dB
Maximum pressure	2000 Pa
Weight (w/o arm)	40 kg
Dimensions (LxWxH)	452 x 550 x 600 mm

\*TSB extension console is used for arms 5m, 6m or 7m in length

MDT SERIES PORTABLE SNAIL EXHAUST FAN	Ref.
Fan MDT/1100 1,1 kW without ventilation pipe	CC112818
Fan MDT/1105 1,1 kW with ventilation pipe 5m	CC112819
Fan MDT/1110 1,1 kW with ventilation pipe 10m	CC112820
Magnetic aluminium hood Ø152	CC112822

# ELECTREX SERVICE



## TECHNICAL ASSISTANCE

We have a specialized technical team at your disposal, with approved repair procedures and with original Electrex spare parts.



## WARRANTY

Our equipment is manufactured with rigorous production processes and tested to operate under the most demanding conditions, guaranteeing its reliability and durability.



## DO YOU HAVE TECHNICAL QUESTIONS?

At Electrex we are always available to listen and answer the needs of our customers as soon as possible. Use our fast **Skype** and **WhatsApp** communication channels to solve your questions or technical difficulties.

**Luís Amante**

 Luís Amante Electrex

 (+351) 968 731 219

**Luciano Santos:**

 acorreia\_12

 (+351) 961 939 968













● Distribution points

📍 Electrex Portugal

**ELECTREX - João R. Matos S.A.**  
Rua do Viso - Santa Joana  
3810-375 Aveiro | PORTUGAL

**Tel.:** (+351) 234 313 433  
**Fax:** (+351) 234 313 024

[info@electrexwelding.com](mailto:info@electrexwelding.com)  
[www.electrexwelding.com](http://www.electrexwelding.com)



# WELDING SINCE 1946

**ELECTREX - João R. Matos S.A.**  
Rua do Viso - Santa Joana  
3810-375 Aveiro | PORTUGAL

Telf: (+351) 234 313 433  
Fax: (+351) 234 313 024



[info@electrexwelding.com](mailto:info@electrexwelding.com)  
[www.electrexwelding.com](http://www.electrexwelding.com)

